



LAURENT SAGARRA

VICE PRESIDENT SUSTAINABILITY

SUSTAINABILITY

‘GROWING TOGETHER ON COMMON GROUNDS TO CREATE A BETTER FUTURE’



IMPORTANT INFORMATION

Presentation

The condensed consolidated unaudited financial statements of JDE Peet's N.V. (the "Company") and its consolidated subsidiaries (the "Group") are prepared in accordance with International Financial Reporting Standards as adopted by the European Union ("IFRS"). In preparing the financial information in these materials, except as otherwise described, the same accounting principles are applied as in the consolidated financial statements of the Group as of, and for, the year ended 31 December 2021 and the related notes thereto. All figures in these materials are unaudited. In preparing the financial information included in these materials, most numerical figures are presented in millions of euro. Certain figures in these materials, including financial data, have been rounded. In tables, negative amounts are shown in parentheses. Otherwise, negative amounts are shown by "-" or "negative" before the amount.

Non-IFRS Measures

These materials contain non-IFRS financial measures (the "Non-IFRS Measures"), which are not liquidity or performance measures under IFRS. These Non-IFRS Measures are presented in addition to the figures that are prepared in accordance with IFRS. The Group's use of Non-IFRS Measures may vary significantly from the use of other companies in its industry. The measures used should not be considered as an alternative to profit (loss), revenue or any other performance measure derived in accordance with IFRS or to net cash provided by operating activities as a measure of liquidity. For further information on Non-IFRS Measures, see the definitions in the press release and adjusted EBIT as described in segment information in the condensed consolidated unaudited financial statements.

Forward-looking Statements

These materials contain forward-looking statements as defined in the United States Private Securities Litigation Reform Act of 1995 concerning the financial condition, results of operations and businesses of the Group. These forward-looking statements and other statements contained in these materials regarding matters that are not historical facts involve predictions. No assurance can be given that such future results will be achieved. Actual events or results may differ materially as a result of risks and uncertainties facing the Group. Such risks and uncertainties could cause actual results to vary materially from the future results indicated, expressed or implied in such forward-looking statements.

There are a number of factors that could affect the Group's future operations and could cause those results to differ materially from those expressed in the forward-looking statements including (without limitation): (a) competitive pressures and changes in consumer trends and preferences as well as consumer perceptions of its brands; (b) fluctuations in the cost of green coffee, including premium Arabica coffee beans, tea or other commodities, and its ability to secure an adequate supply of quality or sustainable coffee and tea; (c) global and regional economic and financial conditions, as well as political and business conditions or other developments; (d) interruption in the Group's manufacturing and distribution facilities; (e) its ability to successfully innovate, develop and launch new products and product extensions and on effectively marketing its existing products; (f) actual or alleged non-compliance with applicable laws or regulations and any legal claims or government investigations in respect of the Group's businesses; (g) difficulties associated with successfully completing acquisitions and integrating acquired businesses; (h) the loss of senior management and other key personnel; and (i) changes in applicable environmental laws or regulations. The forward-looking statements contained in these materials speak only as of the date of these materials. The Group is not under any obligation to (and expressly disclaim any such obligation to) revise or update any forward-looking statements to reflect events or circumstances after the date of these materials or to reflect the occurrence of unanticipated events. The Group cannot give any assurance that forward-looking statements will prove correct, and investors are cautioned not to place undue reliance on any forward-looking statements. Further details of potential risks and uncertainties affecting the Group are described in the Company's public filings with the Netherlands Authority for the Financial Markets (Stichting Autoriteit Financiële Markten) and other disclosures.

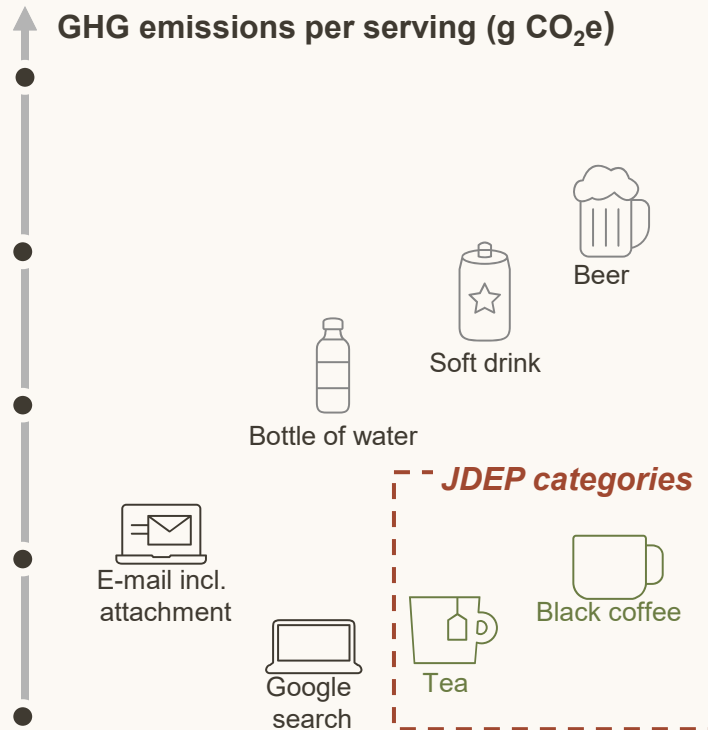
Market and Industry Data

All references to industry forecasts, industry statistics, market data and market share in these materials comprise estimates compiled by analysts, competitors, industry professionals and organisations, of publicly available information or of the Group's own assessment of its markets and sales. Rankings are based on revenue, unless otherwise stated.

COFFEE AND TEA ARE GREAT CATEGORIES AT JDE PEET'S, WE STRIVE TO MAKE THEM EVEN BETTER



One of the **lowest GHG emitting** beverages



Creating a living for many



Source of livelihood for >125M people



Geographically diverse grown in 70+ countries



USD 400bn business globally

Delivering on **key consumer need states**



Providing **positive energy** and allowing to **relax and unwind**



Healthy hydration and zero calories



One of the most consumed drinks globally, emphasizing **accessibility**



Common Grounds

At JDE Peet's, we have nearly 300 years of rich cultural heritage about coffee and tea.

IT'S WHO WE ARE AND WHAT WE DO.

To ensure our coffee and tea can be enjoyed for generations to come, we are living our purpose to create a better future.

WE ARE COMMITTED TO UNLEASH THE POSSIBILITIES OF COFFEE AND TEA TO CREATE A BETTER FUTURE



Where **farmers are prosperous**, and **nature thrives**



Where our streets, streams, and oceans are **free from waste and pollution**



Where the **energy we use is clean**, as is the **air we breathe**



Where **communities thrive** and **people everywhere are valued** for being their true selves

Where JDE Peet's delivers **sustainable growth that creates value** for our shareholders and stakeholders.

THROUGH THE POWER OF OUR BRANDS, WE ENSURE EVERY CUP CONTRIBUTES TO OUR PURPOSE



INCLUSIVE

Empowering farmers and engaging the full value chain to support wellbeing and promote equal opportunity



AUTHENTIC

Walking the talk, only satisfied with true change, impact and transparency, available to all

REGENERATIVE

Committed to net-zero impact, full circularity and regenerative agriculture to build a resilient coffee & tea industry

2022, A LANDMARK IN OUR JOURNEY



RESPONSIBLE SOURCING

BIGGEST STEP CHANGE

2021

30% responsibly sourced coffee



2022

77% responsibly sourced coffee

OTHER 2022 ACHIEVEMENTS

247,244 farmers reached in 2022 (>500k since 2015)

100% Responsibly sourced Palm oil

Rainforest Alliance program for Tea in Turkey



MINIMISING FOOTPRINT

Commitment to Science-Based Targets



Roadmap to net-zero
Scope 1 & 2 **-15%**
Scope 3 **-1%**

100% renewable electricity in EU & Brazil

Recyclable Senseo pouch and compostable tea bags

100% capsule recycling in BE



CONNECTING PEOPLE

<1% Gender pay gap (1st pay equity study)

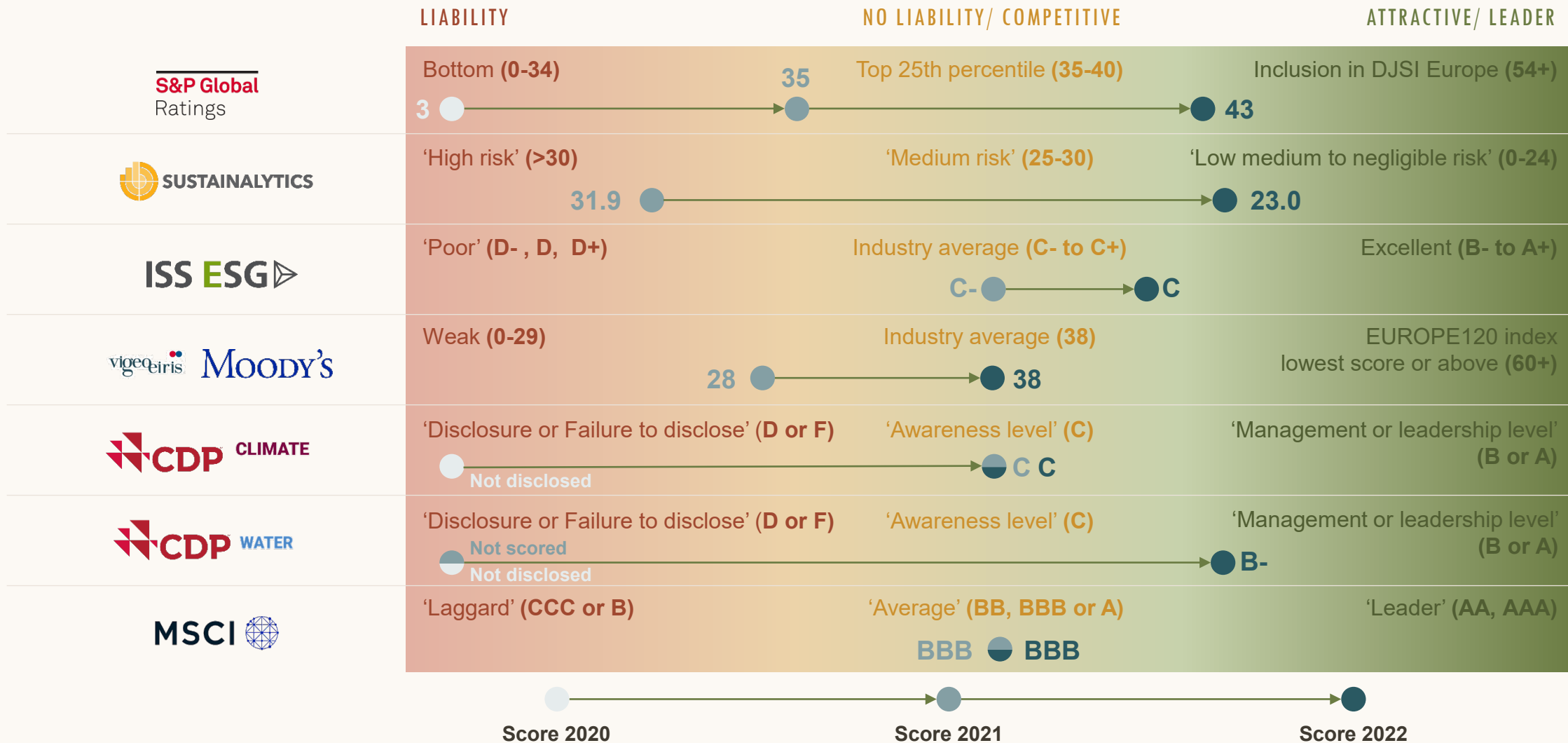


75% Top boxes in engagement score

41% Gender balance in leadership positions

75% Food-safety Certified internal and external manufacturing sites

RECOGNISED FOR OUR IMPROVEMENTS WITH STRONGLY UPGRADED RATINGS





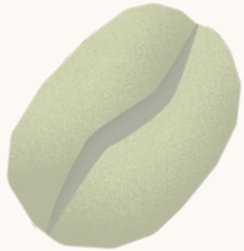
RESPONSIBLE SOURCING

IN COFFEE, WE ARE GOING TO 100% RESPONSIBLY SOURCED COFFEE, DOUBLING OUR FARMER IMPACT



RESPONSIBLE SOURCING

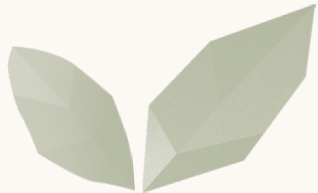
OUR COMMITMENTS



100% responsibly sourced coffee by 2025



Double our farmer reach by 2025 to 1,000,000+ farmers
(vs. previous goal of 500k)



>EUR 150m by 2025
(cumulative investment 2022-2025)

2022 PROGRESS

77% responsibly sourced coffee in 2022
(30% in 2021)

247,244 farmers reached in 2022 in 22 countries
(>500k since 2015)

80% run-rate invested in '22 in responsible coffee sourcing

WE HAVE A DISTINCTIVE 'ASSESS, ADDRESS AND PROGRESS' APPROACH



RESPONSIBLE SOURCING



ASSESS

3rd party verification for all coffee, free for the farmers since 2019

Enveritas

>400KT COFFEE ASSESSED IN 2022

AFRICA EXAMPLE

Supplying farms in Africa: **194'921**

Farmer assessed: **14'625**

Farmer support required / delivered responsibly to reach responsibly sourced status in Africa: **45'151 / 158'282**



ADDRESS

JDE Peet's Farmer Impact Programs implemented globally

50+ IMPACT PROJECTS HAVE BEEN SET UP

EXAMPLE PROJECTS

- Innovea Breeding Programme



- Ethiopia: Coffee Farm Rejuvenation
- Honduras: Education Support

See more next page



PROGRESS

Impact data (output & outcome) to continuously improve



TANZANIA

In 3 years we were able to...

DISTRIBUTED **643,705** IMPROVED COFFEE SEEDLINGS



"These improved seedlings are more resistant to diseases and drought. I was also able to get my first crop one year earlier"

Joseph, coffee farmer from Bukoba



RESPONSIBLE SOURCING

ADDRESS | WE HAVE SET UP 50+ IMPACT PROJECTS

We are partnering to make a difference today...



Ethiopia: Coffee Farm Rejuvenation

37,500 farmers
68% increase in yield



Honduras: Education Support

2 schools' rehabilitation & construction
93 children directly benefitting

and actively engaging to secure the future of coffee.



Innoeva Breeding Programme

JDE Peet's is investing \$500,000/yr with World Coffee Research towards research for coffee of the future, e.g. Innoeva Breeding



Brazil, Vietnam, Mexico, Nicaragua

10-year roadmap to support an agroecological transition in coffee farming, for the benefit of all.

OTHER COMPANIES HAVE ALSO COMMITTED TO THIS APPROACH



RESPONSIBLE
SOURCING

Creating common grounds for the industry with ENVERITAS



Press Release - **DUNKIN'**
COMMITTS TO 100%
RESPONSIBLY SOURCED
COFFEE BY 2025

September 29, 2022



THE J.M. SMUCKER Co.

Website – **THE FOLGERS**
BEST PART PROMISE



Press Release –
TRUEMORROW - NEW
INITIATIVE FOR MORE
TRANSPARENCY AND
SUSTAINABILITY IN COFFEE
CULTIVATION

February 18, 2021



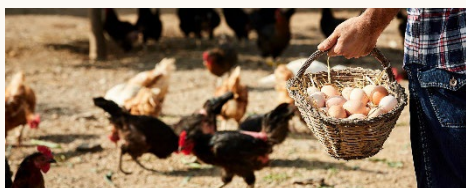
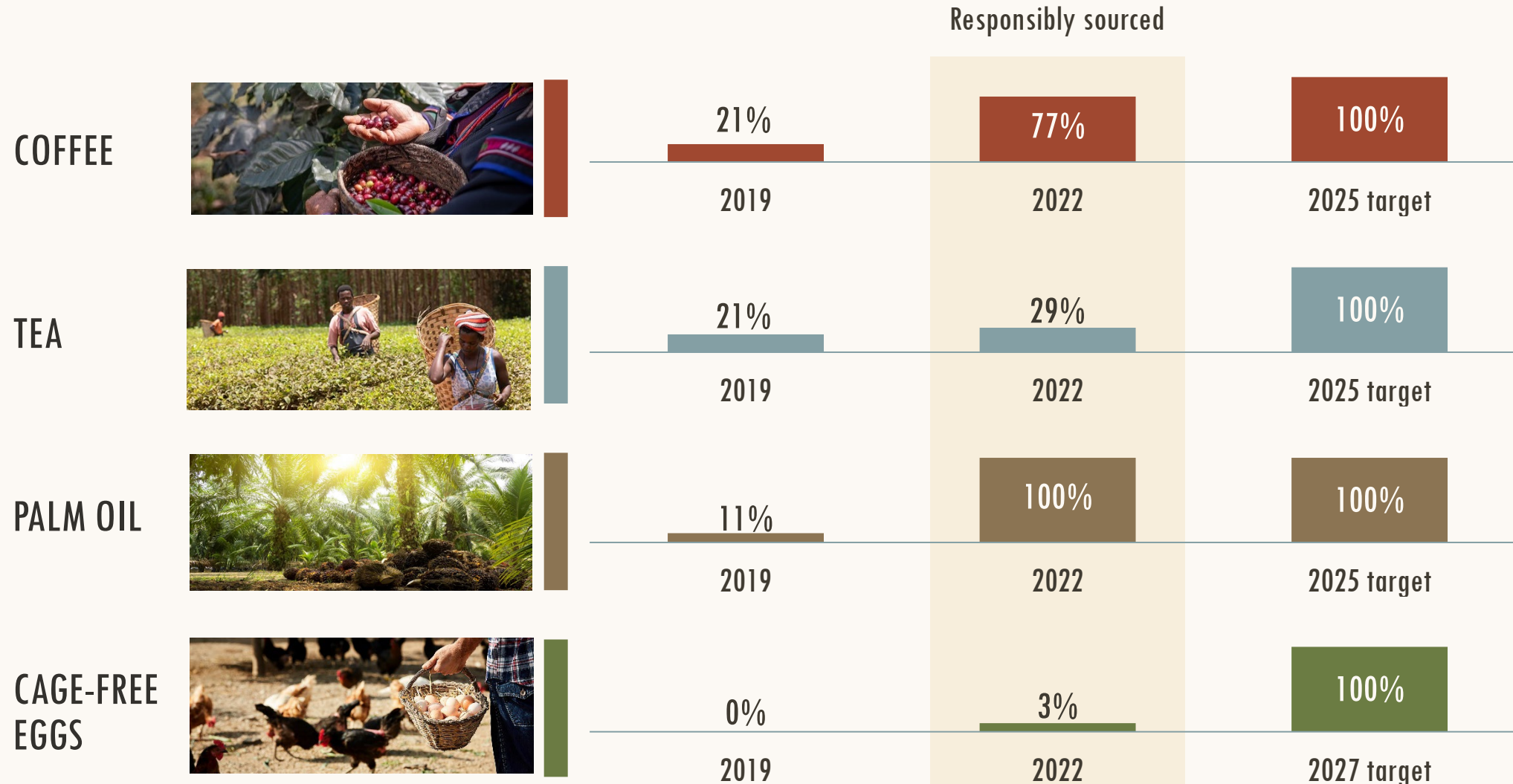
Press Release – **TIM**
HORTONS UNVEILS
SUSTAINABILITY
PLATFORM TIMS FOR
GOOD

April 20, 2021

OUR RESPONSIBLE SOURCING COMMITMENT GOES BEYOND COFFEE



RESPONSIBLE SOURCING





MINIMISING FOOTPRINT

WE HAVE MADE SIGNIFICANT PROGRESS IN REDUCING SCOPE 1&2 GHG EMISSIONS



MINIMISING
FOOTPRINT

Greenhouse gas emission reductions – progress 2022

2022

**Scope 1+2:
-15% (ahead)**

**Scope 3:
-1%**

(vs. 2020 baseline)



Manufacturing

Sustainable tech investments (e.g., energy efficient evaporation process, biomass burner)



Procurement

Progress towards 100% renewable electricity: >40% (with 100% in EU and BR), SBTi commitment of critical vendors



Logistics

Route optimisation and alternative transport mode (intermodal solutions, etc.)



Responsible sourcing

Progress towards net-zero farming (e.g., reforestation programs in Indonesia and Peru, green coffee GHG emissions standardisation)



R&D

Low carbon innovations (e.g., Pickwick transition to compostable filter paper)



CONNECTING PEOPLE

DELIVERING ON HUMAN RIGHTS AND DE&I



ACCELERATING HUMAN RIGHTS ALIGNED WITH UN GLOBAL COMPACT COMMITMENT

Human rights due diligence program across JDEP's supply chain



- Sedex is a **supply chain assessment across E, S and G**
- JDE Peet's uses Sedex in own manufacturing sites and suppliers (non-green coffee & tea)

“Assess, address and progress”

Enveritas

- Our “assess, address and progress” approach analyses **human rights conditions for green coffee and tea**

COMMITTED TO CLOSING THE GENDER GAP



41%

women in leadership positions

43%

women across all employees

<1%

gender pay gap
First pay equity study¹

Note: (1) Excluding Peet's and other non-integrated entities

DELIVERING SAFE, HEALTHY AND DELICIOUS MOMENTS



OUR COMMITMENTS

2022 PROGRESS



100% compliance to nutritional guidelines by 2025

75% compliance to nutrition guidelines



100% food-safety certified manufacturing sites by 2025

75% Food-safety certified internal & external manufacturing sites



No compromise on quality

Complaint per million units sold < 4



WE ARE NOW READY FOR NET-ZERO

TODAY, EVERYTHING IS IN PLACE FOR OUR NET-ZERO COMMITMENT



**We are ready to commit to
1.5°C SBTi and net-zero**



We have a **roadmap** of initiatives



We have **embedded the necessary investments** in our operating model



We have a **unique technology** in place to track and accelerate delivery



CLEAR AND CHALLENGING ROADMAP TO NET-ZERO THROUGH COMMON GROUNDS



90% of emissions	Scope 1+2	Biomass heating	Energy efficiencies	100% renewable energy	Electric fleet		
	Scope 3	Deforestation-free supply chain	Regenerative ag practices	Carbon removal through insetting	Portfolio optimization	Product innovation	Pack reductions

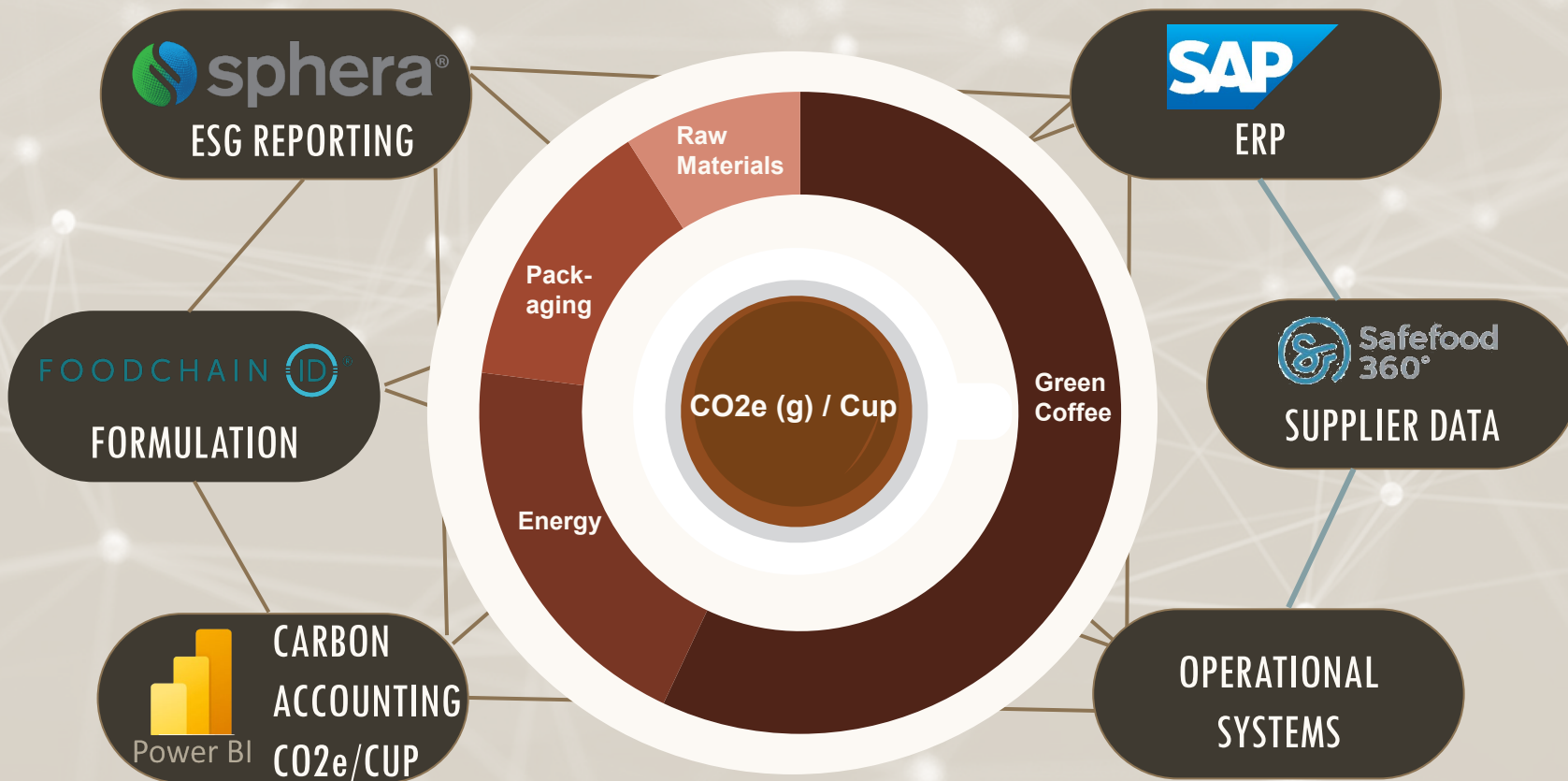
Final 10% emissions	Carbon offsetting
---------------------	-------------------



WE BUILT A UNIQUE CARBON ACCOUNTING TECHNOLOGY THAT WILL HELP US DELIVER A NET-ZERO FUTURE

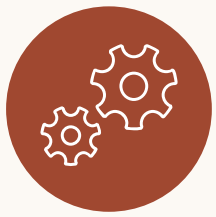
Our unique carbon accounting system is completely integrated and automated...

... and embedded into decisions



Our integrated carbon accounting tool changes our decision-making, e.g.,

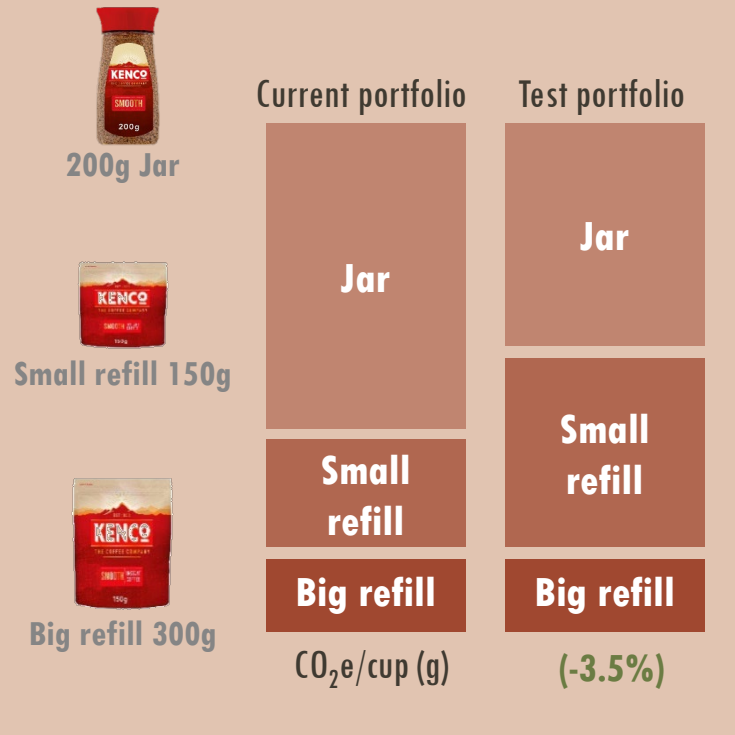
- Automated report by country, by customer, by portfolio on decarbonisation journey
- Monthly financial reporting includes ESG (CO₂/cup)
- Management Team objectives linked to decarbonisation
- Scenario planning with retailers
- Integration into decision-making processes (e.g. innovation pipeline, investment, promotion, etc.)
- Leveraging IT to collect vendor information



CARBON ACCOUNTING OFFERS MULTIPLE APPLICATIONS TO REDUCE OUR FOOTPRINT

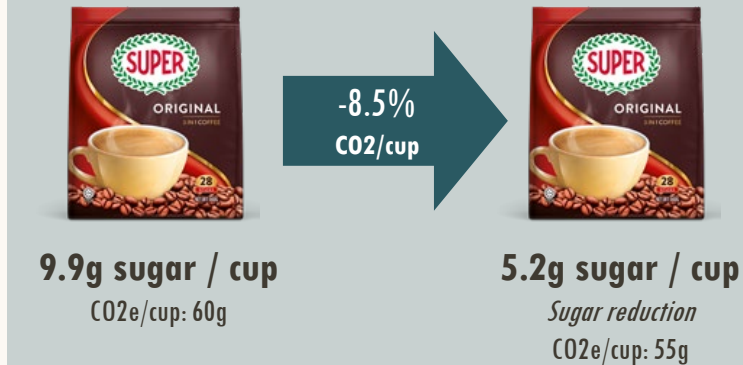
PORTFOLIO MANAGEMENT (with retailers)

Portfolio shift can improve CO₂e footprint (UK)



NUTRITION IMPROVEMENT

Healthier products also impact carbon (APAC)



CO₂ REDUCTION FROM DISPLAYS

Redesign to remove all plastic parts



- ✓ Save 2.8 tonnes material
- ✓ Save 3.2 tonnes CO₂e



COFFEE AND TEA ARE GREAT DRINKS FOR THE WORLD

Supporting millions of farmers, one of the lowest GHG emitting beverages, creating joy for billions every day



WE WANT TO UNLEASH COFFEE AND TEA TO CREATE A BETTER FUTURE

Our Common Grounds program is **inclusive, regenerative and authentic**



WE MADE A BIG STEP-UP IN 2022

Significant acceleration on each of our three pillars: responsible sourcing, minimising footprint and connecting people



WE ARE READY FOR NET-ZERO

We have a clear roadmap, and unique systems and the necessary investments in place

JDE Peet's

A COFFEE & TEA FOR EVERY CUP

